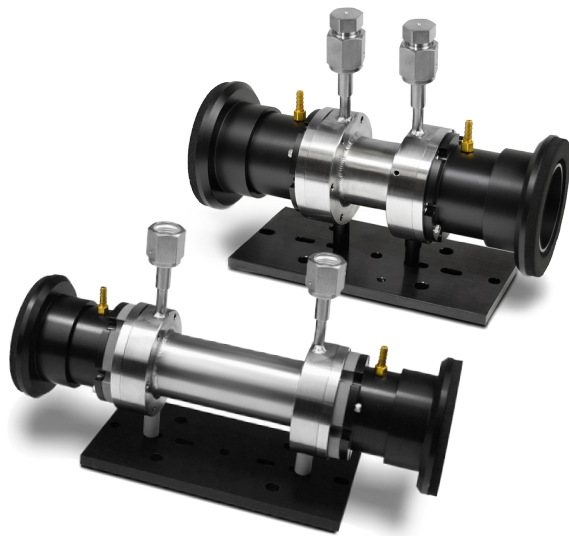


Stainless Steel Short-Path Gas Cells – For Measurement of High Concentration Vapor Components



SPECIFICATIONS

Temperature Range	Ambient to 300 °C
Accuracy	+/- 0.5% of set point
Sensor Type	RTD
Temperature Controller	
Digital Display	+/- 0.1 °C
Input	115/230 V, switchable
Output	10 A/24 VAC 240 W maximum

All cells are delivered with welded VCR fittings. To offer the greatest flexibility, users may optimize their configuration further by choosing Swagelok valves with VCR or 1/4" compression termination. PIKE gas cells have been designed for easy maintenance and cleaning. Our gas cells are baseplate-mounted for stability in the spectrometer sample compartment and offer purge collars to eliminate atmospheric water vapor and CO₂ interferences in the spectrum.

Custom pathlengths and cell materials are available. Contact PIKE Technologies for special orders.

FEATURES

- Measurement of high concentration vapor phase samples
- Wide range of pathlengths, from 1 to 20 cm
- Heated option up to 300 °C
- Baseplate-mounted for stability in the sample compartment

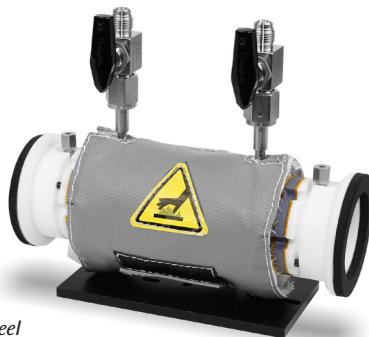
For analyzing more concentrated gases, PIKE Technologies is offering Stainless Steel Short-Path Gas Cells. The durable construction of the metal body may be used under pressure when matched with a suitable IR window. Cell pathlengths are 1, 2, 5, 10, 15, and 20 cm. For maximum precision or to prevent condensation of specific components, heated models are available for a maximum temperature of 300 °C.



1/4" termination



Valve with VCR termination



Heated Stainless Steel
Short-Path Gas Cell

ORDERING INFORMATION

STAINLESS STEEL SHORT-PATH GAS CELL

PART NUMBER	DESCRIPTION
164-21XX	Stainless Steel Gas Cell, 1 cm
164-22XX	Stainless Steel Gas Cell, 2 cm
164-25XX	Stainless Steel Gas Cell, 5 cm
164-20XX	Stainless Steel Gas Cell, 10 cm
164-27XX	Stainless Steel Gas Cell, 15 cm
164-29XX	Stainless Steel Gas Cell, 20 cm

Notes: Replace **XX** with your spectrometer's Instrument Code listed on page 164. Windows not included; order separately. 1 and 2 cm pathlength gas cells use 25 x 4 mm windows and all others use 38 x 6 mm windows. Not all pathlengths fit commercial spectrometer sample compartments.

HEATED SHORT-PATH GAS CELLS

PART NUMBER	DESCRIPTION
164-31XX	Heated Stainless Steel Gas Cell, 300 °C, 1 cm
164-32XX	Heated Stainless Steel Gas Cell, 300 °C, 2 cm
164-35XX	Heated Stainless Steel Gas Cell, 300 °C, 5 cm
164-30XX	Heated Stainless Steel Gas Cell, 300 °C, 10 cm

Notes: Replace **XX** with your spectrometer's Instrument Code listed on page 164. Windows not included; order separately. 1 and 2 cm pathlength gas cells use 25 x 4 mm windows and all others use 38 x 6 mm windows. Not all pathlengths and heating options fit commercial spectrometer sample compartments. High-temperature O-rings are included. Heated short-path gas cells include a digital temperature controller and heating assembly. Please contact PIKE Technologies for custom pathlengths.

IR TRANSPARENT WINDOWS FOR STAINLESS STEEL SHORT-PATH GAS CELL *(select minimum of 2)*

PART NUMBER		DESCRIPTION
25 x 4 mm (1, 2 cm)	38 x 6 mm (5, 10, 15, 20 cm)	
160-1217	160-1322	BaF ₂
160-1211	160-1342	CaF ₂
160-1133	160-1320	KBr
160-1127	160-1343	KRS-5
160-1124	160-1321	NaCl
160-1114	160-1329	ZnSe
160-1110	-----	ZnSe, Anti-Reflective Coating, 1-side
160-1109	-----	ZnSe, Anti-Reflective Coating, 2-sides

Note: ZnSe windows should not be used above 250 °C

VALVES AND REPLACEMENT PARTS

PART NUMBER	DESCRIPTION
164-4000	VCR Valve to VCR Termination Kit
164-4001	Valve to 1/4 inch Termination Kit
164-4002	1/4 inch Termination Kit
164-4006	Viton O-Rings, 25 mm, max. temp. 200 °C (2 ea.)
164-4008	Viton O-Rings, 38 mm, max. temp. 200 °C (2 ea.)
164-4007	High Temperature O-Rings, 25 mm, 300 °C (2 ea.)
164-4009	High Temperature O-Rings, 38 mm, 300 °C (2 ea.)

Notes: Fitting kits include one for inlet and one for outlet. Contact us for other fitting options. Gas cell requires 4 O-rings total.